

# How-To Create A Mosaic Apple



Your very own Mosaic Apple!

Mosaic Apple designed by Pippa Murray  
Hand-modeling by Laura

## What you will need:

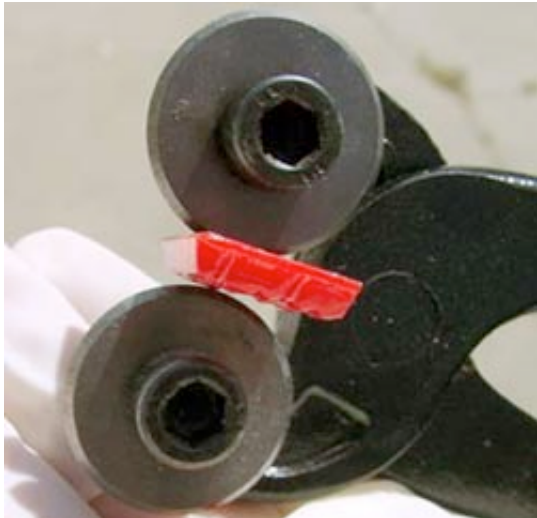
- 1 - red, plastic Apple
- 4 - 24-tile bags of Poppy (stock #25TLE28)
- 1 - 16 oz Pre-Mixed White Grout (stock #25MS5)
- 1 - 4 oz. bottle of Adhesive (stock #25MGA4)
- 1 - 4 oz. bottle of Primer
- 1 - Applicator Set (stock #25MS7)
- Mosaic Tile Nipper (stock #20291)
- Tape
- An old mug to hold the apple as you work on it
- Paper towels
- Water container
- Red and brown acrylic paints to color grout
- 1 - Brick color mosaic tile

## INSTRUCTIONS:

### Designing and Gluing

- 1 If you will be using Mosaic Primer:  
Tape stem of apple to protect from primer and other materials. Apply primer to the apple. Paint one side at a time and allow to dry. Turn the apple over and paint the other side. This is to prevent marring the painted surface as well as saving your table from the wet primer. Use a mug or paper cup to hold the apple while drying.
- 2 Put on a pair of latex gloves and nip half of the red tiles into 16ths and the rest into 9ths. To nip 9ths, nip tile into thirds and then those thirds into thirds. Nip tile into 16ths and smaller narrow strips by nipping into quarters and then nipping off narrow strips as small as possible, getting four pieces out of each quarter.
- 3 Starting in the middle of the roundest part of the apple, spread about 2 square inches of adhesive onto the apple with a V-Notch Trowel (included in Applicator Set). Using the tile cut into 9ths, place in lines horizontally around the belly of the apple. For best effect be careful to match the tesserae by size on both the vertical sides and gracefully follow the surface of the apple and the flow of the pieces. Cover your section of adhesive in lines of tile keeping an even spacing between the tesserae.

*Mosaic Maestro Tip:* A narrow interstitial space is most pleasing to the eye!  
For a natural effect, mix one or two lines of the smaller tesserae in with the 9ths.
- 4 While the adhesive is still wet, tiles can be shifted with a craft stick until you are satisfied with the



positioning. The adhesive will begin to dry within 5 to 7 minutes. Do not attempt to reposition the tile after the adhesive begins to set. The adhesive dries clear and can be peeled off, so don't worry if you get a little on the visible side of the tile. Make sure to keep your hands clean and free of adhesive while applying tile. Wash hands as needed.

**5** Continue to apply small patches of adhesive and tile to the belly of the apple in this manner until you have covered as much of the apple surface that stands above the cup holding it. Leave the top and bottom ends for later. Clean off any extra adhesive around the tile with a craft stick. Allow adhesive to dry for at least 30 minutes before proceeding.

**6** Now work on the other side, being careful to continue the flow of the tesserae already applied. Once you have finished the belly all the way around you can work on the top and bottom. It works best if you let the apple dry in between each stage as before.

**7** Starting with the top, glue the 16ths around the top surface following the line of the tesserae on the belly. It looks best if you make a gradual shift from bigger tesserae to smaller, and from lighter red to darker red. You might have to nip even smaller pieces to fit in the tight space around the stem.

*Mosaic Maestro Tip:* For an added touch of authenticity, use a piece of our Brick tile for the bottom.

Nip a corner of the Brick tile and then nip this corner into a small circle the size of an apple seed. It does not have to be perfectly round. Take the Brick tile piece and glue to the center of the bottom hollow.

**8** Fill in the rest with 16ths, gradually shifting from larger to smaller pieces as you did for the top.

Allow to dry overnight.

## Grouting

**1** Fill a container with water and have handy plenty of paper towels. Pour out 1/2 Cup of grout into a container and carefully add water 1 Tablespoon at a time while stirring, until the grout has a thick, creamy consistency. This will be about a 7:1 ratio. You may add a little pigment into the grout if wished at this point; otherwise you can color with watered down acrylic paints after it has dried.

**2** Using the red plastic Grout Spreader Tool, scoop out grout and spread it over the tiles and into the crevices between the tiles.

*Mosaic Maestro Tip:* Be gentle - you don't want to loosen tiles. If a tile should become loose, apply more adhesive to the tile and reapply to the base. Continue grouting around the repaired tile, making sure not to dislodge it again.

**3** Work the grout into the crevices until it becomes smooth and level with the tile surface. The best way to do this is by spreading the grout in one direction and then spreading it in the opposite direction. When you have finished applying grout, wait about 15 minutes for it to harden slightly.





Dampen the yellow Grout Sponge with cool water and squeeze it. The sponge should be damp, but not soaking wet. Gently wipe the dampened sponge across the tile surface, removing excess grout from all surfaces. Wash out the sponge periodically while cleaning the tiles, as it will soak up a lot of grout.

- 5 Allow to dry overnight. Gently loosen any remaining excess grout from tiles with a wooden craft stick. Remove tape from stem. Gently polish tiles with a paper towel or cloth. For extra shiny tiles, polish with a small amount of vegetable or olive oil.

Your Mosaic Apple is finished and ready to be admired!